



## Wardrobe

---

# Types of Wardrobes



Hinged Wardrobes



Sliding Wardrobes



Floor To Ceiling Wardrobes



# Hinged Wardrobe



# Core Material Offerings



1. ISI:303 Grade 6mm MR Ply (for Back Panel)
2. ISI:303 Grade 16mm MR Ply (for Carcass/ Shutters / Shelves)
3. ISI:303 Grade 6mm BWR Ply (for Back Panel)
4. ISI:303 Grade 16mm BWR Ply (for Carcass/ Shutters / Shelves)
5. ISI:710 Grade 6mm BWP Ply (for Back Panel)
6. ISI:710 Grade 16mm BWP Ply (for Carcass/ Shutters / Shelves)
7. IS : 12406 Grade 16mm MDF (Shutters)
8. IS : 3478 Grade 16mm HDHMR (Shutters)

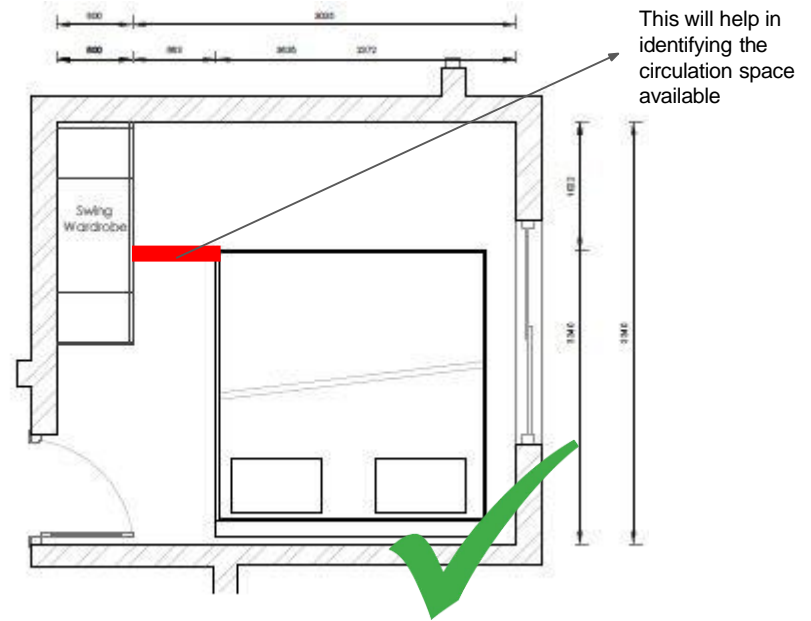
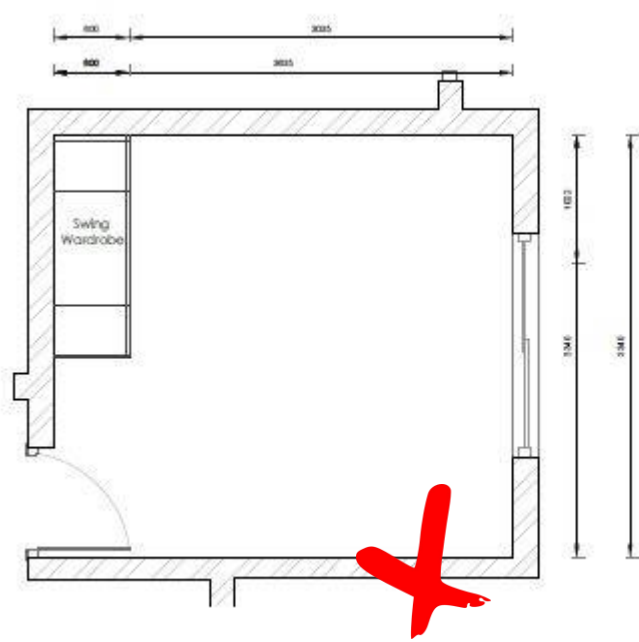
Plywood Brand:  
Equivalent to Century / Greenlam  
Calibrated Ply

# Wardrobe structure

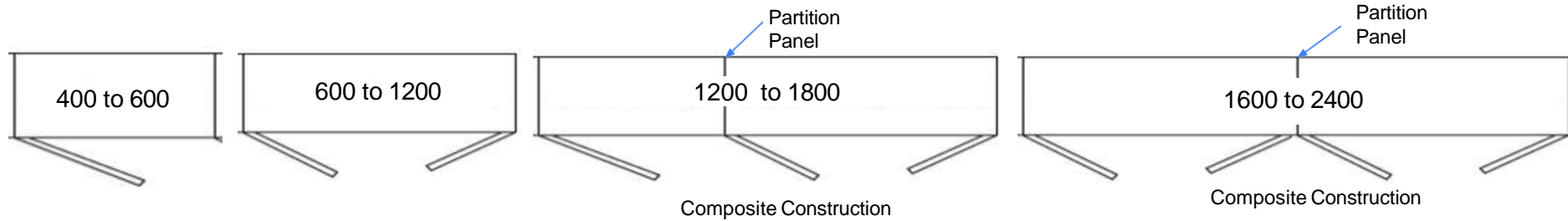


# Wardrobe placement

Always recommended to show the basic furniture of a room (for example - a cot ) so that the plan can be supported by the dimensions for circulation space, utility space, etc.

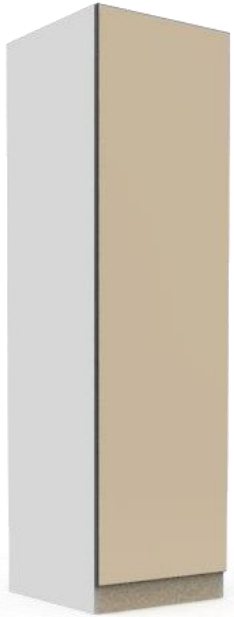


# Hinged Wardrobe Standardisation



	Standard Dim	Min to Max Dim	Remarks
Width -1 Shutter 2 Shutter 3 Shutter 4 Shutter	400, 450, 500, 600. 700, 800, 900, 1000, 1100, 1200. 1200, 1350, 1500, 1650, 1800. 1600, 1800, 2000, 2200, 2400.	400 to 600 600 to 1200 1200 to 1800 1600 to 2400	
Depth	580	450 to 600	The Depth of the cabinet is adjustable from 450 to 600 at every 10mm step <b>Depth is exclusive of Shutter Thickness</b>
Height	2100	1800 to 2100	The height of the cabinet is adjustable from 2100 to 2200 at every 10mm step. <b>Module Height is Including Skirting.</b> <b>Height is starting from 1800, This unit can be used as a Book Shelve near the Study table.</b> <b>The height is at 2100 to align the Door Lintel Level.</b>

# HW1S-LAGS Hinged Wardrobe 1 Shutter Lacquered Alu Glass



Hettich –Hinges–  
Regular or Soft Close

	Standard Dim	Min to Max Dim	Remarks
Width	400, 450, 500, 600	400 to 600	The Width of the cabinet is adjustable from 400 to 600 at every 50mm step
Depth	580	450 to 600	The Depth of the cabinet is adjustable from 450 to 600 at every 10mm step <b>Depth is exclusive of Shutter Thickness</b>
Height	2100	1800 to 2200	The height of the cabinet is adjustable from 2100 to 2200 at every 10mm step. <b>Module Height is Including Skirting.</b> <b>Height is starting from 1800, This unit can be used as a Book Shelve near the Study table.</b> <b>The standard height is at 2100 to align the Door Lintel Level.</b>

**Applicable for all size**

Removable Shelf  
Horizontal Fixed Shelf  
Hanger Rod  
Internal Drawer (450D)

**Applicable for 450mm**

Ebco Wardrobe Pullout Basket (Soft Close) 450mm  
Ebco Wardrobe Pullout Basket (Wicker) (Soft Close) 450mm  
Ebco Wardrobe Pullout Trouser - Saree (Soft Close) (With 4 Hangers) 450mm  
Ebco Wardrobe Pullout Drawer Organiser (Soft Close) 450mm  
Ebco Wardrobe Pullout Ironing Board 430mm

**Cabinet Depth Min -400mm**

Ebco Tie & Belt Holder 300mm (On Left Panel)

**Applicable for 600mm width**

Hafele Storage Box 600mm  
Hafele Leather Storage Box 600mm  
Hafele Metal Box 600mm  
Hafele PVC Rattan Basket 600mm  
Hafele Trouser Pullout 600mm  
Ebco Wardrobe Pullout Basket (Soft Close) 600mm  
Ebco Wardrobe Pullout Basket (Wicker) (Soft Close) 600mm  
Ebco Wardrobe Pullout Trouser - Saree (Soft Close) (With 7 Hangers) 600mm  
Ebco Wardrobe Pullout Drawer Organiser (Soft Close) 600mm  
Ebco Wardrobe Pullout Shoe Rack (Soft Close) 600mm

**Applicable for 560mm Depth**

Hafele Sliding Belt Rack 8 Hook Aluminium Oroglass (On Right Panel)  
Hafele Sliding Tie Rack 20 Hook Aluminium Oroglass (On Right Panel)



# HW1S Hinged Wardrobe 1Shutter



Hettich –Hinges–  
Regular or Soft Close

	Standard Dim	Min to Max Dim	Remarks
Width	400, 450, 500, 600	300 to 600	The Width of the cabinet is adjustable from 400 to 600 at every 50mm step
Depth	580	450 to 600	The Depth of the cabinet is adjustable from 450 to 600 at every 10mm step <b>Depth is exclusive of Shutter Thickness</b>
Height	2100	1800 to 2200	The height of the cabinet is adjustable from 2100 to 2200 at every 10mm step. <b>Module Height is Including Skirting.</b> <b>Height is starting from 1800, This unit can be used as a Book Shelve near the Study table.</b> <b>The standard height is at 2100 to align the Door Lintel Level.</b>

**Applicable for all size**

Removable Shelf  
Horizontal Fixed Shelf  
Hanger Rod  
Internal Drawer (450D)  
External Drawer

**Applicable for 450mm**

Ebco Wardrobe Pullout Basket (Soft Close) 450mm  
Ebco Wardrobe Pullout Basket (Wicker) (Soft Close) 450mm  
Ebco Wardrobe Pullout Trouser - Saree (Soft Close) (With 4 Hangers) 450mm  
Ebco Wardrobe Pullout Drawer Organiser (Soft Close) 450mm  
Ebco Wardrobe Pullout Ironing Board 430mm

**Cabinet Depth Min -400mm**

Ebco Tie & Belt Holder 300mm (On Left Panel)

**Applicable for 600mm width**

Hafele Storage Box 600mm  
Hafele Leather Storage Box 600mm  
Hafele Metal Box 600mm  
Hafele PVC Rattan Basket 600mm  
Hafele Trouser Pullout 600mm  
Ebco Wardrobe Pullout Basket (Soft Close) 600mm  
Ebco Wardrobe Pullout Basket (Wicker) (Soft Close) 600mm  
Ebco Wardrobe Pullout Trouser - Saree (Soft Close) (With 7 Hangers) 600mm  
Ebco Wardrobe Pullout Drawer Organiser (Soft Close) 600mm  
Ebco Wardrobe Pullout Shoe Rack (Soft Close) 600mm

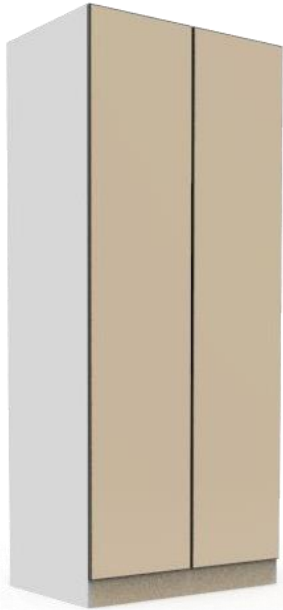
**Applicable for 560mm Depth**

Hafele Sliding Belt Rack 8 Hook Aluminium Oroglass (On Right Panel)  
Hafele Sliding Tie Rack 20 Hook Aluminium Oroglass (On Right Panel)

# Wardrobe Patterns Using External Drawer



# HW2S-LAGS Hinged Wardrobe 2 Shutter Lacquered Alu Glass



Hettich –Hinges  
Regular or Soft Close

	Standard Dim	Min to Max Dim	Remarks
Width	700, 800, 900, 1000, 1100, 1200	700 to 1200	The Width of the cabinet is adjustable from 700 to 1200 at every 50mm step
Depth	580	450 to 600	The Depth of the cabinet is adjustable from 450 to 600 at every 10mm step <b>Depth is exclusive of Shutter Thickness</b>
Height	2100	1800 to 2200	The height of the cabinet is adjustable from 2100 to 2200 at every 10mm step. <b>Module Height is Including Skirting.</b> <b>Height is starting from 1800, This unit can be used as a Book Shelve near the Study table.</b> <b>The standard height is at 2100 to align the Door Lintel Level.</b>
<b>Applicable for all size</b> Removable Shelf Horizontal Fixed Shelf Hanger Rod Internal Drawer (450D)		<b>Applicable for 600mm width</b> Hafele Storage Box 600mm Hafele Leather Storage Box 600mm Hafele Metal Box 600mm Hafele PVC Rattan Basket 600mm Hafele Trousers Pullout 600mm Ebco Wardrobe Pullout Basket (Soft Close) 600mm Ebco Wardrobe Pullout Basket (Wicker) (Soft Close) 600mm Ebco Wardrobe Pullout Trousers - Saree (Soft Close) (With 7 Hangers) 600mm Ebco Wardrobe Pullout Drawer Organiser (Soft Close) 600mm Ebco Wardrobe Pullout Shoe Rack (Soft Close) 600mm Hafele Wardrobe Lift (830-1150W)	
<b>Applicable for 450mm</b> Ebco Wardrobe Pullout Basket (Soft Close) 450mm Ebco Wardrobe Pullout Basket (Wicker) (Soft Close) 450mm Ebco Wardrobe Pullout Trousers - Saree (Soft Close) (With 4 Hangers) 450mm Ebco Wardrobe Pullout Drawer Organiser (Soft Close) 450mm Ebco Wardrobe Pullout Ironing Board 430mm		<b>Applicable for 560mm Depth</b> Hafele Sliding Belt Rack 8 Hook Aluminium Oroglass (On Right Panel) Hafele Sliding Tie Rack 20 Hook Aluminium Oroglass (On Right Panel)	
<b>Cabinet Depth Min -400mm</b> Ebco Tie & Belt Holder 300mm (On Left Panel)			

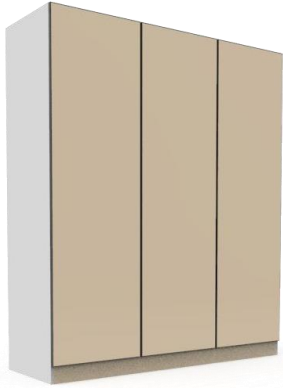
# HW2S Hinged Wardrobe 2 Shutter



Hettich –Hinges  
Regular or Soft Close

	Standard Dim	Min to Max Dim	Remarks
Width	700, 800, 900, 1000, 1100, 1200	600 to 1200	The Width of the cabinet is adjustable from 600 to 1200 at every 50mm step
Depth	580	450 to 600	The Depth of the cabinet is adjustable from 450 to 600 at every 10mm step <b>Depth is exclusive of Shutter Thickness</b>
Height	2100	1800 to 2200	The height of the cabinet is adjustable from 2100 to 2200 at every 10mm step. <b>Module Height is Including Skirting.</b> <b>Height is starting from 1800, This unit can be used as a Book Shelve near the Study table.</b> <b>The standard height is at 2100 to align the Door Lintel Level.</b>
<b>Applicable for all size</b> Removable Shelf Horizontal Fixed Shelf Hanger Rod Internal Drawer (450D) External Drawer <b>Applicable for 450mm</b> Ebco Wardrobe Pullout Basket (Soft Close) 450mm Ebco Wardrobe Pullout Basket (Wicker) (Soft Close) 450mm Ebco Wardrobe Pullout Trouser - Saree (Soft Close) (With 4 Hangers) 450mm Ebco Wardrobe Pullout Drawer Organiser (Soft Close) 450mm Ebco Wardrobe Pullout Ironing Board 430mm <b>Cabinet Depth Min -400mm</b> Ebco Tie & Belt Holder 300mm (On Left Panel)			<b>Applicable for 600mm width</b> Hafele Storage Box 600mm Hafele Leather Storage Box 600mm Hafele Metal Box 600mm Hafele PVC Rattan Basket 600mm Hafele Trouser Pullout 600mm Ebco Wardrobe Pullout Basket (Soft Close) 600mm Ebco Wardrobe Pullout Basket (Wicker) (Soft Close) 600mm Ebco Wardrobe Pullout Trouser - Saree (Soft Close) (With 7 Hangers) 600mm Ebco Wardrobe Pullout Drawer Organiser (Soft Close) 600mm Ebco Wardrobe Pullout Shoe Rack (Soft Close) 600mm Hafele Wardrobe Lift (830-1150W)  <b>Applicable for 560mm Depth</b> Hafele Sliding Belt Rack 8 Hook Aluminium Oroglass (On Right Panel) Hafele Sliding Tie Rack 20 Hook Aluminium Oroglass (On Right Panel)

# HW3S-LAGS Hinged Wardrobe 3 Shutter Lacquered Alu Glass



Hettich –Hinges  
Regular or Soft Close

	Standard Dim	Min to Max Dim	Remarks
Width	1200 1350 1500 1650 1800	1200 to 1800	The Width of the cabinet is adjustable from 1200 to 1800 at every 50mm step
Depth	580	450 to 600	The Depth of the cabinet is adjustable from 450 to 600 at every 10mm step <b>Depth is exclusive of Shutter Thickness</b>
Height	2100	1800 to 2200	The height of the cabinet is adjustable from 2100 to 2200 at every 10mm step. <b>Module Heigh is Including Skirting.</b> <b>Height is starting from 1800, This unit can be used as a Book Shelve near the Study table.</b> <b>The standard height is at 2100 to align the Door Lintel Level.</b>

#### Applicable for all size

Removable Shelf  
Horizontal Fixed Shelf  
Hanger Rod  
Internal Drawer (450D)

#### Applicable for 450mm

Ebco Wardrobe Pullout Basket (Soft Close) 450mm  
Ebco Wardrobe Pullout Basket (Wicker) (Soft Close) 450mm  
Ebco Wardrobe Pullout Trouser - Saree (Soft Close) (With 4 Hangers) 450mm  
Ebco Wardrobe Pullout Drawer Organiser (Soft Close) 450mm  
Ebco Wardrobe Pullout Ironing Board 430mm

#### Cabinet Depth Min -400mm

Ebco Tie & Belt Holder 300mm (On Left Panel)

#### Applicable for 600mm width

Hafele Storage Box 600mm  
Hafele Leather Storage Box 600mm  
Hafele Metal Box 600mm  
Hafele PVC Rattan Basket 600mm  
Hafele Trouser Pullout 600mm  
Ebco Wardrobe Pullout Basket (Soft Close) 600mm  
Ebco Wardrobe Pullout Basket (Wicker) (Soft Close) 600mm  
Ebco Wardrobe Pullout Trouser - Saree (Soft Close) (With 7 Hangers) 600mm  
Ebco Wardrobe Pullout Drawer Organiser (Soft Close) 600mm  
Ebco Wardrobe Pullout Shoe Rack (Soft Close) 600mm  
Hafele Wardrobe Lift (830-1150W)

#### Applicable for 560mm Depth

Hafele Sliding Belt Rack 8 Hook Aluminium Oroglass (On Right Panel)  
Hafele Sliding Tie Rack 20 Hook Aluminium Oroglass (On Right Panel)

# HW3S Hinged Wardrobe 3 Shutter



Hettich –Hinges  
Regular or Soft Close

	Standard Dim	Min to Max Dim	Remarks
Width	1200 1350 1500 1650 1800	1200 to 1800	The Width of the cabinet is adjustable from 1200 to 1800 at every 50mm step
Depth	580	450 to 600	The Depth of the cabinet is adjustable from 450 to 600 at every 10mm step <b>Depth is exclusive of Shutter Thickness</b>
Height	2100	1800 to 2200	The height of the cabinet is adjustable from 2100 to 2200 at every 10mm step. <b>Module Heigh is Including Skirting.</b> <b>Height is starting from 1800, This unit can be used as a Book Shelve near the Study table.</b> <b>The standard height is at 2100 to align the Door Lintel Level.</b>

**Applicable for all size**

- Removable Shelf
- Horizontal Fixed Shelf
- Hanger Rod
- Internal Drawer (450D)
- External Drawer

**Applicable for 450mm**

- Ebco Wardrobe Pullout Basket (Soft Close) 450mm
- Ebco Wardrobe Pullout Basket (Wicker) (Soft Close) 450mm
- Ebco Wardrobe Pullout Trouser - Saree (Soft Close) (With 4 Hangers) 450mm
- Ebco Wardrobe Pullout Drawer Organiser (Soft Close) 450mm
- Ebco Wardrobe Pullout Ironing Board 430mm

**Cabinet Depth Min -400mm**

- Ebco Tie & Belt Holder 300mm (On Left Panel)

**Applicable for 600mm width**

- Hafele Storage Box 600mm
- Hafele Leather Storage Box 600mm
- Hafele Metal Box 600mm
- Hafele PVC Rattan Basket 600mm
- Hafele Trouser Pullout 600mm
- Ebco Wardrobe Pullout Basket (Soft Close) 600mm
- Ebco Wardrobe Pullout Basket (Wicker) (Soft Close) 600mm
- Ebco Wardrobe Pullout Trouser - Saree (Soft Close) (With 7 Hangers) 600mm
- Ebco Wardrobe Pullout Drawer Organiser (Soft Close) 600mm
- Ebco Wardrobe Pullout Shoe Rack (Soft Close) 600mm
- Hafele Wardrobe Lift (830-1150W)

**Applicable for 560mm Depth**

- Hafele Sliding Belt Rack 8 Hook Aluminium Oroglass (On Right Panel)
- Hafele Sliding Tie Rack 20 Hook Aluminium Oroglass (On Right Panel)

# HW4S-LAGS Hinged Wardrobe 4 Shutter Lacquered Alu Glass



Hettich –Hinges  
Regular or Soft Close

	Standard Dim	Min to Max Dim	Remarks
Width	1600 1800 2000 2200 2400	1600 to 2400	The Width of the cabinet is adjustable from 1600 to 2400 at every 50mm step
Depth	580	450 to 600	The Depth of the cabinet is adjustable from 450 to 600 at every 10mm step <b>Depth is exclusive of Shutter Thickness</b>
Height	2100	1800 to 2200	The height of the cabinet is adjustable from 2100 to 2200 at every 10mm step. <b>Module Heigh is Including Skirting.</b> <b>Height is starting from 1800, This unit can be used as a Book Shelve near the Study table.</b> <b>The standard height is at 2100 to align the Door Lintel Level.</b>

### Applicable for all size

Removable Shelf  
Horizontal Fixed Shelf  
Hanger Rod  
Internal Drawer (450D)

### Applicable for 450mm

Ebco Wardrobe Pullout Basket (Soft Close) 450mm  
Ebco Wardrobe Pullout Basket (Wicker) (Soft Close) 450mm  
Ebco Wardrobe Pullout Trouser - Saree (Soft Close) (With 4 Hangers) 450mm  
Ebco Wardrobe Pullout Drawer Organiser (Soft Close) 450mm  
Ebco Wardrobe Pullout Ironing Board 430mm

### Cabinet Depth Min -400mm

Ebco Tie & Belt Holder 300mm (On Left Panel)

### Applicable for 600mm width

Hafele Storage Box 600mm  
Hafele Leather Storage Box 600mm  
Hafele Metal Box 600mm  
Hafele PVC Rattan Basket 600mm  
Hafele Trouser Pullout 600mm  
Ebco Wardrobe Pullout Basket (Soft Close) 600mm  
Ebco Wardrobe Pullout Basket (Wicker) (Soft Close) 600mm  
Ebco Wardrobe Pullout Trouser - Saree (Soft Close) (With 7 Hangers) 600mm  
Ebco Wardrobe Pullout Drawer Organiser (Soft Close) 600mm  
Ebco Wardrobe Pullout Shoe Rack (Soft Close) 600mm  
Hafele Wardrobe Lift (830-1150W)

### Applicable for 560mm Depth

Hafele Sliding Belt Rack 8 Hook Aluminium Oroglass (On Right Panel)  
Hafele Sliding Tie Rack 20 Hook Aluminium Oroglass (On Right Panel)

# HW4S Hinged Wardrobe 4 Shutter



Hettich –Hinges  
Regular or Soft Close

	Standard Dim	Min to Max Dim	Remarks
Width	1600 1800 2000 2200 2400	1600 to 2400	The Width of the cabinet is adjustable from 1600 to 2400 at every 50mm step
Depth	580	450 to 600	The Depth of the cabinet is adjustable from 450 to 600 at every 10mm step <b>Depth is exclusive of Shutter Thickness</b>
Height	2100	1800 to 2200	The height of the cabinet is adjustable from 2100 to 2200 at every 10mm step. <b>Module Heigh is Including Skirting.</b> <b>Height is starting from 1800, This unit can be used as a Book Shelve near the Study table.</b> <b>The standard height is at 2100 to align the Door Lintel Level.</b>

### Applicable for all size

Removable Shelf  
Horizontal Fixed Shelf  
Hanger Rod  
Internal Drawer (450D)  
External Drawer

### Applicable for 450mm

Ebco Wardrobe Pullout Basket (Soft Close) 450mm  
Ebco Wardrobe Pullout Basket (Wicker) (Soft Close) 450mm  
Ebco Wardrobe Pullout Trouser - Saree (Soft Close) (With 4 Hangers) 450mm  
Ebco Wardrobe Pullout Drawer Organiser (Soft Close) 450mm  
Ebco Wardrobe Pullout Ironing Board 430mm

### Cabinet Depth Min -400mm

Ebco Tie & Belt Holder 300mm (On Left Panel)

### Applicable for 600mm width

Hafele Storage Box 600mm  
Hafele Leather Storage Box 600mm  
Hafele Metal Box 600mm  
Hafele PVC Rattan Basket 600mm  
Hafele Trouser Pullout 600mm  
Ebco Wardrobe Pullout Basket (Soft Close) 600mm  
Ebco Wardrobe Pullout Basket (Wicker) (Soft Close) 600mm  
Ebco Wardrobe Pullout Trouser - Saree (Soft Close) (With 7 Hangers) 600mm  
Ebco Wardrobe Pullout Drawer Organiser (Soft Close) 600mm  
Ebco Wardrobe Pullout Shoe Rack (Soft Close) 600mm  
Hafele Wardrobe Lift (830-1150W)

### Applicable for 560mm Depth

Hafele Sliding Belt Rack 8 Hook Aluminium Oroglass (On Right Panel)  
Hafele Sliding Tie Rack 20 Hook Aluminium Oroglass (On Right Panel)



# HWLCNL2S - Hinged wardrobe L Corner Left 2 Shutter



Hettich –Hinges  
Regular or Soft Close

	Standard Dim	Min to Max Dim	Remarks
Width	900, 1050		Right Slide Door Will be 20mm Extra
Depth	580	450 to 600	The Depth of the cabinet is adjustable from 450 to 600 at every 10mm step Depth is exclusive of Shutter Thickness
Height	2100	1800 to 2200	The height of the cabinet is adjustable from 2100 to 2200 at every 10mm step. Module Heigh is Including Skirting. Height is starting from 1800, This unit can be used as a Book Shelve near the Study table. The standard height is at 2100 to align the Door Lintel Level.

Applicable for all size

Removable Shelf  
Horizontal Fixed Shelf  
Hanger Rod

# HWLCNR2S : Hinged wardrobe L Corner Right 2 Shutter



Hettich –Hinges  
Regular or Soft Close

	Standard Dim	Min to Max Dim	Remarks
Width	900, 1050		Left Slide Door Will be 20mm Extra
Depth	580	450 to 600	The Depth of the cabinet is adjustable from 450 to 600 at every 10mm step Depth is exclusive of Shutter Thickness
Height	2100	1800 to 2200	The height of the cabinet is adjustable from 2100 to 2200 at every 10mm step. Module Heigh is Including Skirting. Height is starting from 1800, This unit can be used as a Book Shelve near the Study table. The standard height is at 2100 to align the Door Lintel Level.

Applicable for all size

Removable Shelf  
Horizontal Fixed Shelf  
Hanger Rod

# HWBCOR- Hinged Wardrobe Corner MModule Right Shutter



Hettich –Hinges  
Regular or Soft Close

	Standard Dim	Min to Max Dim	Remarks
Width	1000, 1050	950 to 1050	
Depth	580	450 to 600	The Depth of the cabinet is adjustable from 450 to 600 at every 10mm step <b>Depth is exclusive of Shutter Thickness</b>
Height	2100	1800 to 2200	The height of the cabinet is adjustable from 2100 to 2200 at every 10mm step. <b>Module Heigh is Including Skirting.</b> <b>Height is starting from 1800, This unit can be used as a Book Shelve near the Study table.</b> <b>The standard height is at 2100 to align the Door Lintel Level.</b>

**Applicable for all size**

Removable Shelf  
Horizontal Fixed Shelf  
Hanger Rod

# HWBCOR- L : Hinged Wardrobe Corner MOdule Left Shutter



Hettich –Hinges  
Regular or Soft Close

	Standard Dim	Min to Max Dim	Remarks
Width	1000, 1050	950 to 1050	
Depth	580	450 to 600	The Depth of the cabinet is adjustable from 450 to 600 at every 10mm step <b>Depth is exclusive of Shutter Thickness</b>
Height	2100	1800 to 2200	The height of the cabinet is adjustable from 2100 to 2200 at every 10mm step. <b>Module Heigh is Including Skirting.</b> <b>Height is starting from 1800, This unit can be used as a Book Shelve near the Study table.</b> <b>The standard height is at 2100 to align the Door Lintel Level.</b>

**Applicable for all size**

Removable Shelf  
Horizontal Fixed Shelf

# Dresser Unit



Hettich –Hinges  
Regular or Soft Close

	Standard Dim	Min to Max Dim	Remarks
Width	450, 600	450 to 600	
Depth	580	450 to 600	The Depth of the cabinet is adjustable from 450 to 600 at every 10mm step. <b>Depth is exclusive of Shutter Thickness</b>
Height	2100	1800 to 2200	The height of the cabinet is adjustable from 2100 to 2200 at every 10mm step. <b>Module Heigh is Including Skirting.</b> <b>Height is starting from 1800, This unit can be used as a Book Shelve near the Study table.</b> <b>The standard height is at 2100 to align the Door Lintel Level.</b>
<b>Applicable for all size</b>		Removable Shelf	

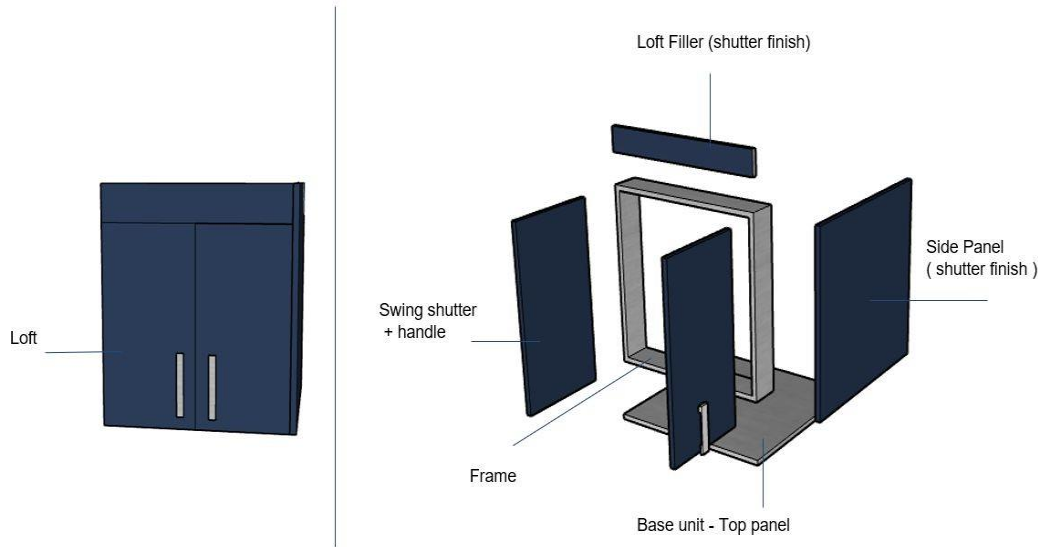
**Note - Depth option modifies bottom drawers only. Depth for the shutter part is fixed to 200mm**

# Frame Loft



# Loft structure

- Each loft shutter Width should start at 300mm width and not be exceeding 600mm.
- Frame Loft's maximum Length is 2400mm. If the space is beyond 8' then it is mandatory to add another frame loft for the required / remaining space.
- If the loft is between walls then start it with filler, followed by Shutter spacing, and end it with Filler.



Prolance: Loft Creation

Width	1200	Height	600
Depth	580	Height from GL	0
Top panel height	50	Left filler width	50
Right filler width	50	No. of shutters	2

Left side end panel     Left End Panel Ext 0

Right side end panel     Filler & Shutter Ext 0

First door is single     Right End Panel Ext 0

+ Add    X Remove

Width	Handle Position
550.00	Left Bottom Vertical (Right Swind)
550.00	Right Bottom Vertical (Left Swind)

Remaining Width : 0.00

Apply

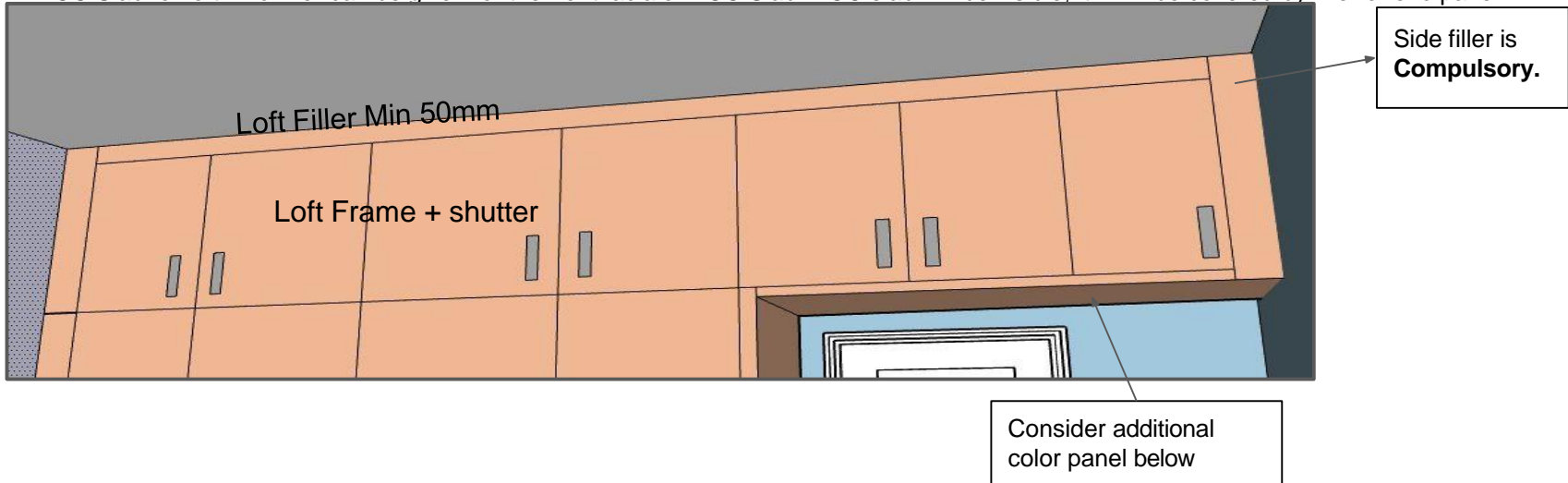
It is mandatory to add 0 (Zero) if no filler is required

Choose the Swing.

**The remaining Width should always be 0.**  
Balance dimension to be added in the Fillers

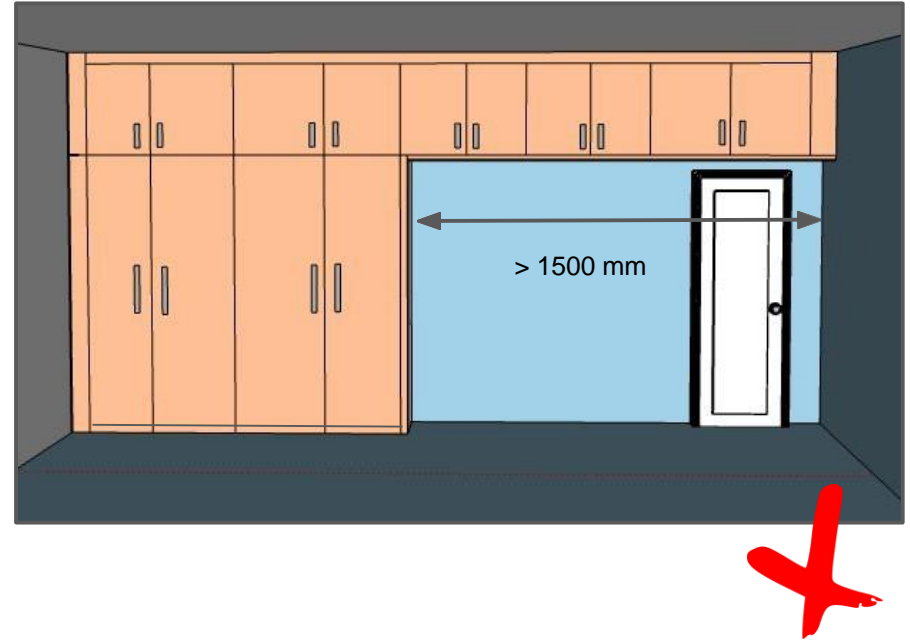
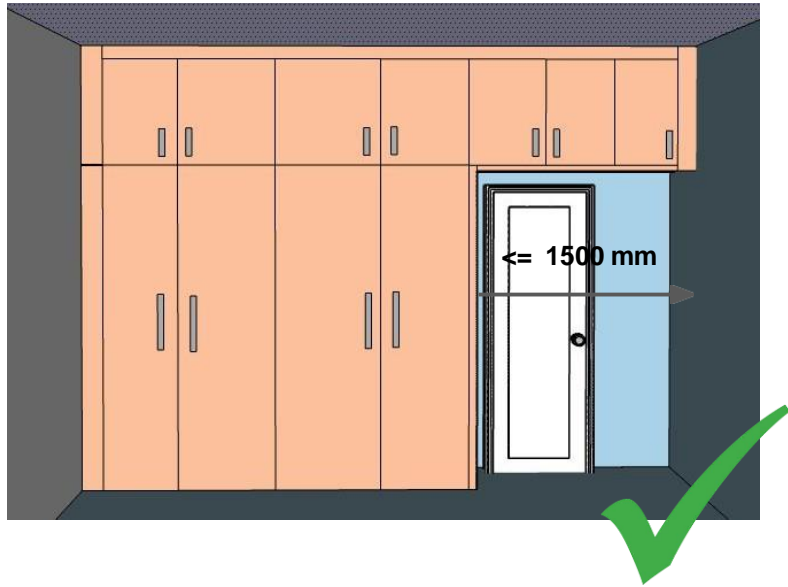
# Wardrobe with lofts - Important points to be considered

- Lofts can't cover the fire safety system (smoke detector, sprinkler) provided by the builder.
- Lofts can't be provided if there is a false ceiling above the wardrobe.
- In the case of a false ceiling, a clear space of 1200mm should be available between the false ceiling & wardrobe wall.
- The minimum height of the Top filler should be 50mm, considering the lowest ceiling height from the finished floor level (FFL).
- Consider the location of beams & columns while planning the wardrobe & loft.
- For Corner loft a loft carcass is preferred. A corner loft carcass will be supplied with 2 individual opening doors with wide-angle hinges.
- For lofts above sliding doors check if an additional panel/filler is provided above the sliding wardrobe carcass & the loft frame/carcass.
- RCC Slab for loft - No filler can be given for the front facia of RCC Slab. RCC slab will be visible, it can't be covered by filler or end panel.





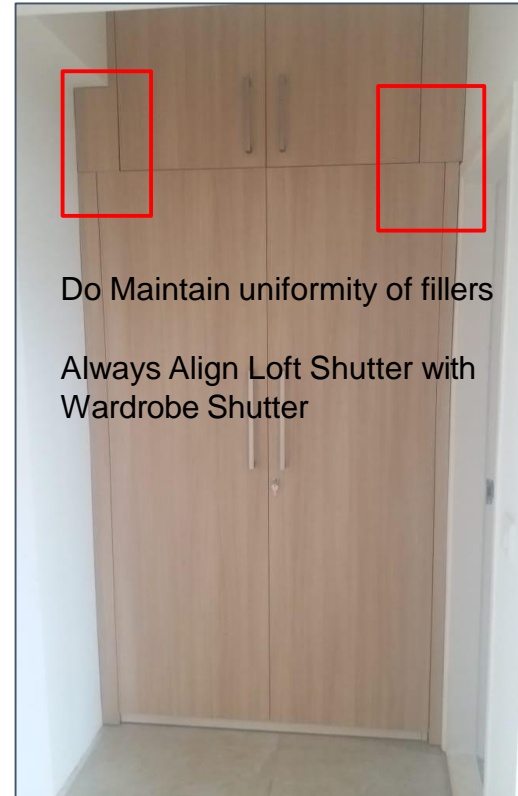
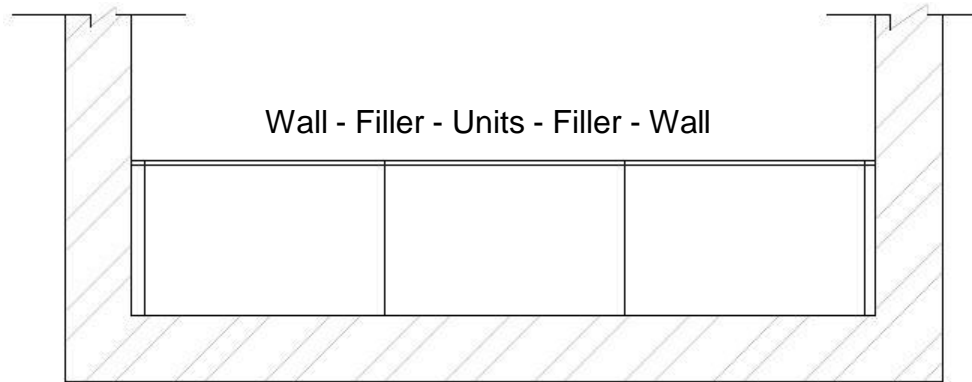
# Wardrobe with lofts - Important points to be considered



Extended lofts are advised only up to a maximum of 1500mm.  
This is advised considering the safe limit under excessive loading of lofts.

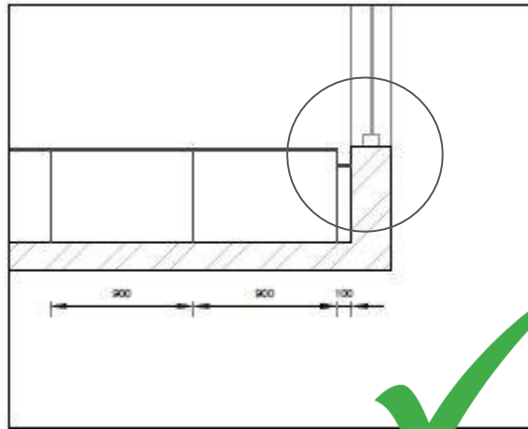
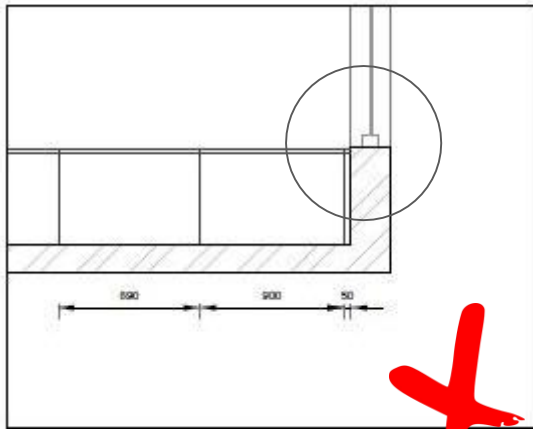
# Wardrobe with lofts - Important points to be considered

Whenever there is a wall at the end, always start with a filler and end with a filler.



# Wardrobe with lofts - Important points to be considered

When a wardrobe is next to a window/balcony door, consider the location of curtain rods while planning the wardrobe.



# Sliding Wardrobe

Topline L – Installation Video

<https://www.youtube.com/watch?v=UCE1iUEXVcA>



# Sliding Wardrobe - Shutters



Design - 1



Design - 2



Design - 3



Design - 4



Design - 5



Design - 6



Design - 7

# SLWR2S-LE – Sliding Wardrobe 2 Shutter – Left Extension



Hettich - Top Line L Runner – Track Length **3000mm.**

**Lesser Depth Panel should always be placed towards the wall Side.**

	Standard Dim	Min to Max Dim	Remarks
Width	1600, 1700, 1800, 1900, 2000, 2100, 2200, 2300, 2400	N/A	<b>The door width is rounded off to arrive at the fixed Cabinet Width. Hence NS is not applicable</b> <b>1600 = 800 + 800 Shutter Width.</b>
Depth	580	580	<b>Depth is exclusive of Shutter Thickness. Extended Side panel more by 35mm</b>
Height	2100	2100 to 2200	The height of the cabinet is adjustable from 2100 to 2200 at every 10mm step. <b>Module Heigh is Including Skirting.</b> <b>The standard height is at 2100 to align the Door Lintel Level.</b>

### **Applicable for all size**

Removable Shelf  
Horizontal Fixed Shelf  
Hanger Rod  
Internal Drawer (450D)

### **Applicable for 450mm**

Ebco Wardrobe Pullout Basket (Soft Close) 450mm  
Ebco Wardrobe Pullout Basket (Wicker) (Soft Close) 450mm  
Ebco Wardrobe Pullout Trouser - Saree (Soft Close) (With 4 Hangers) 450mm  
Ebco Wardrobe Pullout Drawer Organiser (Soft Close) 450mm  
Ebco Wardrobe Pullout Ironing Board 430mm

### **Cabinet Depth Min -400mm**

Ebco Tie & Belt Holder 300mm (On Left Panel)

### **Applicable for 600mm width**

Hafele Storage Box 600mm  
Hafele Leather Storage Box 600mm  
Hafele Metal Box 600mm  
Hafele PVC Rattan Basket 600mm  
Hafele Trouser Pullout 600mm  
Ebco Wardrobe Pullout Basket (Soft Close) 600mm  
Ebco Wardrobe Pullout Basket (Wicker) (Soft Close) 600mm  
Ebco Wardrobe Pullout Trouser - Saree (Soft Close) (With 7 Hangers) 600mm  
Ebco Wardrobe Pullout Drawer Organiser (Soft Close) 600mm  
Ebco Wardrobe Pullout Shoe Rack (Soft Close) 600mm  
Hafele Wardrobe Lift (830-1150W)

### **Applicable for 560mm Depth**

Hafele Sliding Belt Rack 8 Hook Aluminium Oroglass (On Right Panel)  
Hafele Sliding Tie Rack 20 Hook Aluminium Oroglass (On Right Panel)

# SLWR2S-RE – Sliding Wardrobe 2 Shutter – Right Extension



Hettich - Top L3000mm Inner – Track Length  
 Lesser Depth Panel should always be placed towards the wall Side.

	Standard Dim	Min to Max Dim	Remarks
Width	1600, 1700, 1800, 1900, 2000, 2100, 2200, 2300, 2400	N/A	The door width is rounded off to arrive at the fixed Cabinet Width. Hence NS is not applicable 1600 = 800 + 800 Shutter Width.
Depth	580	580	Depth is exclusive of Shutter Thickness. Extended Side panel more by 35mm
Height	2100	2100 to 2200	The height of the cabinet is adjustable from 2100 to 2200 at every 10mm step. Module Height is Including Skirting. The standard height is at 2100 to align the Door Lintel Level.

### Applicable for all size

Removable Shelf  
 Horizontal Fixed Shelf  
 Hanger Rod  
 Internal Drawer (450D)

### Applicable for 450mm

Ebco Wardrobe Pullout Basket (Soft Close) 450mm  
 Ebco Wardrobe Pullout Basket (Wicker) (Soft Close) 450mm  
 Ebco Wardrobe Pullout Trouser - Saree (Soft Close) (With 4 Hangers) 450mm  
 Ebco Wardrobe Pullout Drawer Organiser (Soft Close) 450mm  
 Ebco Wardrobe Pullout Ironing Board 430mm

### Cabinet Depth Min -400mm

Ebco Tie & Belt Holder 300mm (On Left Panel)

### Applicable for 600mm width

Hafele Storage Box 600mm  
 Hafele Leather Storage Box 600mm  
 Hafele Metal Box 600mm  
 Hafele PVC Rattan Basket 600mm  
 Hafele Trouser Pullout 600mm  
 Ebco Wardrobe Pullout Basket (Soft Close) 600mm  
 Ebco Wardrobe Pullout Basket (Wicker) (Soft Close) 600mm  
 Ebco Wardrobe Pullout Trouser - Saree (Soft Close) (With 7 Hangers) 600mm  
 Ebco Wardrobe Pullout Drawer Organiser (Soft Close) 600mm  
 Ebco Wardrobe Pullout Shoe Rack (Soft Close) 600mm  
 Hafele Wardrobe Lift (830-1150W)

### Applicable for 560mm Depth

Hafele Sliding Belt Rack 8 Hook Aluminium Oroglass (On Right Panel)  
 Hafele Sliding Tie Rack 20 Hook Aluminium Oroglass (On Right Panel)

# SLWR2S-RE – Sliding Wardrobe 2 Shutter – Right Extension



Hettich - Top L3000mm. Inner – Track Length

	Standard Dim	Min to Max Dim	Remarks
Width	2400, 2700, 2850	N/A	The door width is rounded off to arrive at the fixed Cabinet Width. Hence NS is not applicable. 2400 = 800 + 800+ 800 Shutter Width
Depth	580	580	Depth is exclusive to Shutter Thickness.
Height	2100	1800 to 2200	The height of the cabinet is adjustable from 2100 to 2200 at every 10mm step. Module Height is Including Skirting. The standard height is at 2100 to align the Door Lintel Level.

### Applicable for all size

Removable Shelf  
Horizontal Fixed Shelf  
Hanger Rod  
Internal Drawer (450D)

### Applicable for 450mm

Ebco Wardrobe Pullout Basket (Soft Close) 450mm  
Ebco Wardrobe Pullout Basket (Wicker) (Soft Close) 450mm  
Ebco Wardrobe Pullout Trouser - Saree (Soft Close) (With 4 Hangers) 450mm  
Ebco Wardrobe Pullout Drawer Organiser (Soft Close) 450mm  
Ebco Wardrobe Pullout Ironing Board 430mm

### Cabinet Depth Min -400mm

Ebco Tie & Belt Holder 300mm (On Left Panel)

### Applicable for 600mm width

Hafele Storage Box 600mm  
Hafele Leather Storage Box 600mm  
Hafele Metal Box 600mm  
Hafele PVC Rattan Basket 600mm  
Hafele Trouser Pullout 600mm  
Ebco Wardrobe Pullout Basket (Soft Close) 600mm  
Ebco Wardrobe Pullout Basket (Wicker) (Soft Close) 600mm  
Ebco Wardrobe Pullout Trouser - Saree (Soft Close) (With 7 Hangers) 600mm  
Ebco Wardrobe Pullout Drawer Organiser (Soft Close) 600mm  
Ebco Wardrobe Pullout Shoe Rack (Soft Close) 600mm  
Hafele Wardrobe Lift (830-1150W)

### Applicable for 560mm Depth

Hafele Sliding Belt Rack 8 Hook Aluminium Oroglass (On Right Panel)  
Hafele Sliding Tie Rack 20 Hook Aluminium Oroglass (On Right Panel)



# Floor to Ceiling Wardrobe



**A Floor-To-Ceiling Wardrobe With Sliding Shutters It Has Customizable Internals.**

**Many Material Options Are Available For Shutters.**

**Lofts Will Be Hidden Behind The Shutters. No Need To Build Separate shutters For Loft.**

**Ideal For Large Spaces And Works Well In Small Spaces Also**

**Currently, we are offering Aristo-Profiles for our Floor To Ceiling Wardrobes.**

# Floor to Ceiling Wardrobe - Shutter Component

- 1 Stile
- 2 Double Top Track
- 3 Double Bottom Track
- 4 Top Rail
- 5 Bottom Rail
- 6 Silicon Gasket U Shape
- 7 Dividing Rail
- 8 Bottom Track Positioner
- 9 Bottom Roller
- 10 Top Asymmetric Roller
- 11 Top Symmetric Roller
- 12 Weather Strip
- 13 Assembly Screw



## FEATURES

Bottom track is the load bearing channel that sits on the floor. This makes the movement smooth.

Top track acts as the guide for the shutters.

Top track is screwed to the RCC ceiling.

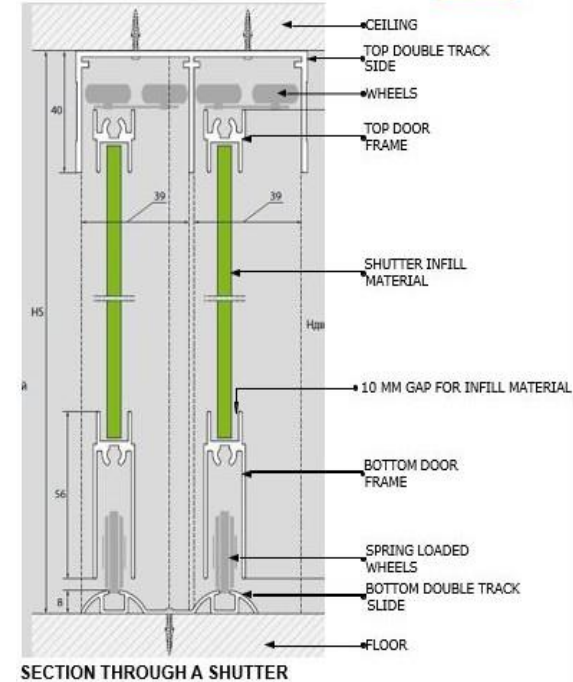
In case of False ceiling, a structural member needs to be provided above the false ceiling to screw the channel. Alternatively, the false ceiling part above the wardrobe can be made in ply.

Shutters are by default soft close and lockable.

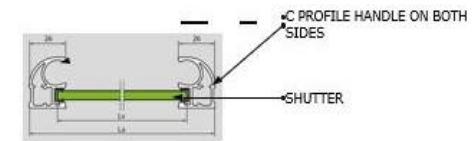
A maximum of 10 mm thickness infill material can be used

## CORE MATERIAL

8 mm THK MDF FOR LAMINATES

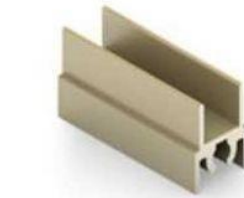
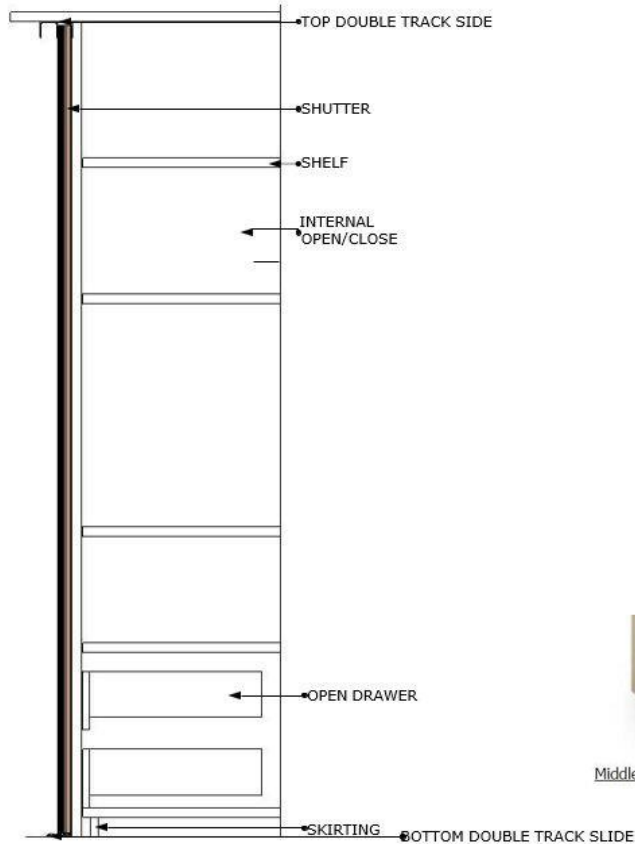


SECTION THROUGH A SHUTTER

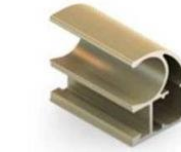


PLAN OF A SHUTTER

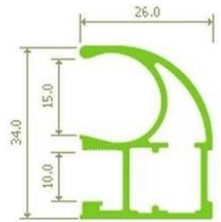
# Floor to Ceiling Wardrobe - Shutter Component



Top door frame



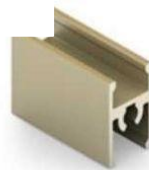
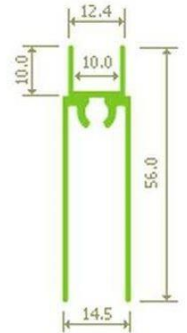
Vertical profile C



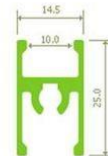
Top double-track slide



Bottom door frame



Middle door frame

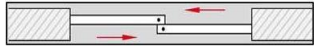


Bottom double-track slide



TYPICAL SECTION THROUGH A WARDROBE

# Floor to Ceiling Wardrobe - Dimensions



## OVERALL DIMENSIONS

**MAXIMUM** WIDTH FOR 2 DOOR WARDROBE - 2375MM  
**MINIMUM** WIDTH FOR 2 DOOR WARDROBE - 1175MM

**MAXIMUM** HEIGHT - 2825 MM  
**MINIMUM** HEIGHT - 2100 MM

**MAXIMUM** WIDTH FOR A SINGLE SHUTTER - 1200 MM  
**MINIMUM** WIDTH FOR A SINGLE SHUTTER - 600 MM

## OVERALL DIMENSIONS

**MAXIMUM** WIDTH FOR 3 DOOR WARDROBE - 3540 MM  
**MINIMUM** WIDTH FOR 3 DOOR WARDROBE - 2400 MM

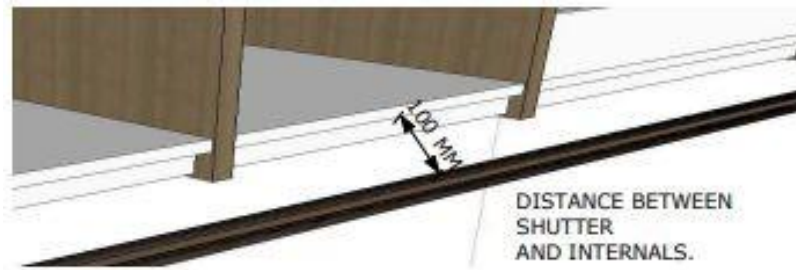
## DOOR WIDTH CALCULATION

Doors	Mode	Formula (with weather strip)
2 pcs.		$Ld = (Ldw + 25 \text{ mm})/2$
3 pcs.		$Ld = (Ldw + 60 \text{ mm})/3$

## CRITICAL DIMENSIONS

DISTANCE FROM THE CARCASE END TO THE SHUTTER END – 100MM  
 DISTANCE BETWEEN 2 SLIDING SHUTTERS 10MM  
 OVERLAP OF SHUTTERS 25MM

If the Room Height is beyond 2850 mm - Gypsum False Ceiling should be taken into consideration.



# Floor to Ceiling Wardrobe - Component



## SHUTTERS

Shutters are from floor to ceiling.  
These are made of aluminium frame and infill materials.  
These run on a bottom track and a top rail



## INTERNALS

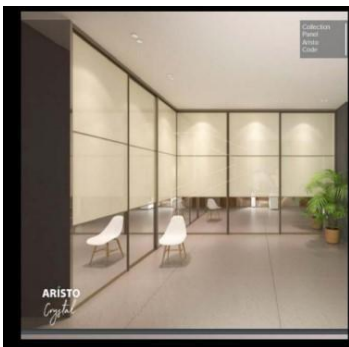
Internals are available in 2 heights - 2100 mm and 2400 mm

## ACCESSORIES

Additional wardrobe accessories can be used.



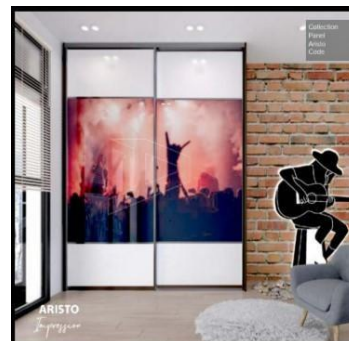
# Aristo - Shutter (Select in Beats)



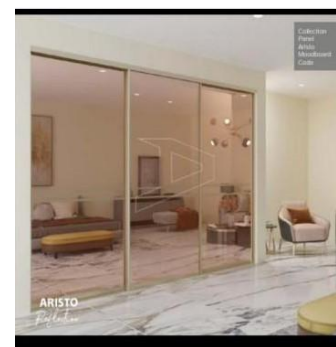
CRL-01 (C-Type Champagne)



GLA-01 (C-Type Champagne)



IMP-01 (C-Type Mercury)



RFL-01 (C-Type Gold)



HGH-02 (C-Type Champagne)



RFL-02 (C-Type Gold)

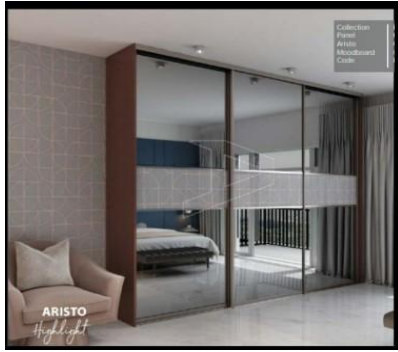


STR-02 (C-Type Pearl Grey)



TES-02 (C-Type Gold)

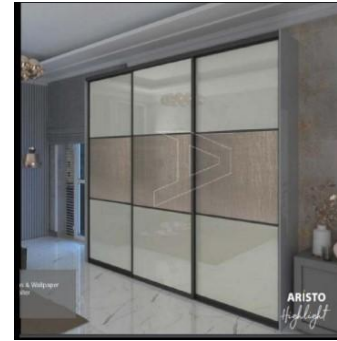
# Aristo - Shutter (Select in Beats)



HGH-03 (C-Type Champagne)



STR-03 (C-Type Champagne)



HGH-04 (C-Type Jupiter)



LAT-04 (C-Type White)



STR-04 (C-Type Champagne)



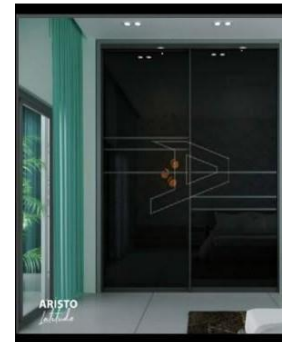
LAT-03 (C-Type Gold)



CRL-05 (C-Type Black)

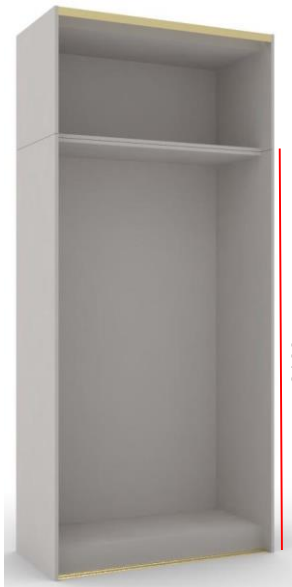


CRL-06 (C-Type Black)



CRL-06 (C-Type Black)

# FTC2SLSW - Floor to Ceiling 2 Sliding Shutter Wardrobe



2100

	Standard Dim	Min to Max Dim	Remarks
Width	1175	N/A	<p>Carcase Width is fixed to 1175 to round off the shutter Width.</p> <p>Formula = (Total Width + Overlapping space)/2 (1175 + 25) / 2 = 600mm</p>
Depth	600	560 to 600	
Height	2700, 2850	2700 to 2850	The height of the cabinet is adjustable at every 10mm step.

### Applicable for all size

Removable Shelf  
Horizontal Fixed Shelf  
Hanger Rod  
Internal Drawer (450D)

### Applicable for 450mm

Ebco Wardrobe Pullout Basket (Soft Close) 450mm  
Ebco Wardrobe Pullout Basket (Wicker) (Soft Close) 450mm  
Ebco Wardrobe Pullout Trouser - Saree (Soft Close) (With 4 Hangers) 450mm  
Ebco Wardrobe Pullout Drawer Organiser (Soft Close) 450mm  
Ebco Wardrobe Pullout Ironing Board 430mm

### Cabinet Depth Min -400mm

Ebco Tie & Belt Holder 300mm (On Left Panel)

### Applicable for 600mm width

Hafele Storage Box 600mm  
Hafele Leather Storage Box 600mm  
Hafele Metal Box 600mm  
Hafele PVC Rattan Basket 600mm  
Hafele Trouser Pullout 600mm  
Ebco Wardrobe Pullout Basket (Soft Close) 600mm  
Ebco Wardrobe Pullout Basket (Wicker) (Soft Close) 600mm  
Ebco Wardrobe Pullout Trouser - Saree (Soft Close) (With 7 Hangers) 600mm  
Ebco Wardrobe Pullout Drawer Organiser (Soft Close) 600mm  
Ebco Wardrobe Pullout Shoe Rack (Soft Close) 600mm  
Hafele Wardrobe Lift (830-1150W)

### Applicable for 560mm Depth

Hafele Sliding Belt Rack 8 Hook Aluminium Oroglass (On Right Panel)  
Hafele Sliding Tie Rack 20 Hook Aluminium Oroglass (On Right Panel)

**Note : Wardrobe Internal Height is 2100mm & Remaining space is considered as Loft Space.**



# FTC2SLSW-2SH - Floor to Ceiling 2 Sliding Shutter Wardrobe with Partition



	Standard Dim	Min to Max Dim	Remarks
Width	1185, 1385, 1585, 1758, 1985, 2185, 2375	1185 to 2375	The width is adjustable at every 20mm Step  Formula = (Total Width + Overlapping space)/2 (2375 + 25) / 2 = 1200mm
Depth	600	560 to 600	
Height	2700, 2850	2700 to 2850	The height of the cabinet is adjustable at every 10mm step.

### Applicable for all size

Removable Shelf  
Horizontal Fixed Shelf  
Hanger Rod  
Internal Drawer (450D)

### Applicable for 450mm

Ebco Wardrobe Pullout Basket (Soft Close) 450mm  
Ebco Wardrobe Pullout Basket (Wicker) (Soft Close) 450mm  
Ebco Wardrobe Pullout Trouser - Saree (Soft Close) (With 4 Hangers) 450mm  
Ebco Wardrobe Pullout Drawer Organiser (Soft Close) 450mm  
Ebco Wardrobe Pullout Ironing Board 430mm

### Cabinet Depth Min -400mm

Ebco Tie & Belt Holder 300mm (On Left Panel)

### Applicable for 600mm width

Hafele Storage Box 600mm  
Hafele Leather Storage Box 600mm  
Hafele Metal Box 600mm  
Hafele PVC Rattan Basket 600mm  
Hafele Trouser Pullout 600mm  
Ebco Wardrobe Pullout Basket (Soft Close) 600mm  
Ebco Wardrobe Pullout Basket (Wicker) (Soft Close) 600mm  
Ebco Wardrobe Pullout Trouser - Saree (Soft Close) (With 7 Hangers) 600mm  
Ebco Wardrobe Pullout Drawer Organiser (Soft Close) 600mm  
Ebco Wardrobe Pullout Shoe Rack (Soft Close) 600mm  
Hafele Wardrobe Lift (830-1150W)

### Applicable for 560mm Depth

Hafele Sliding Belt Rack 8 Hook Aluminium Oroglass (On Right Panel)  
Hafele Sliding Tie Rack 20 Hook Aluminium Oroglass (On Right Panel)

**Note : Wardrobe Internal Height is 2100mm & Remaining space is considered as Loft Space.**

# FTC2SLSW-2SH-WOTU - Floor to Ceiling 2 Sliding Shutter Wardrobe without Top Loft



	Standard Dim	Min to Max Dim	Remarks
Width	1175	N/A	<p>Carcase Width is fixed to 1175 to round off the shutter Width.</p> <p>Formula = (Total Width + Overlapping space)/2 (1175 + 25) / 2 = 600mm</p>
Depth	600	560 to 600	
Height	2100, 2400	2100 to 2400	The height of the cabinet is adjustable at every 10mm step.

#### Applicable for all size

Removable Shelf  
 Horizontal Fixed Shelf  
 Hanger Rod  
 Internal Drawer (450D)

#### Applicable for 450mm

Ebco Wardrobe Pullout Basket (Soft Close) 450mm  
 Ebco Wardrobe Pullout Basket (Wicker) (Soft Close) 450mm  
 Ebco Wardrobe Pullout Trouser - Saree (Soft Close) (With 4 Hangers) 450mm  
 Ebco Wardrobe Pullout Drawer Organiser (Soft Close) 450mm  
 Ebco Wardrobe Pullout Ironing Board 430mm

#### Cabinet Depth Min -400mm

Ebco Tie & Belt Holder 300mm (On Left Panel)

#### Applicable for 600mm width

Hafele Storage Box 600mm  
 Hafele Leather Storage Box 600mm  
 Hafele Metal Box 600mm  
 Hafele PVC Rattan Basket 600mm  
 Hafele Trouser Pullout 600mm  
 Ebco Wardrobe Pullout Basket (Soft Close) 600mm  
 Ebco Wardrobe Pullout Basket (Wicker) (Soft Close) 600mm  
 Ebco Wardrobe Pullout Trouser - Saree (Soft Close) (With 7 Hangers) 600mm  
 Ebco Wardrobe Pullout Drawer Organiser (Soft Close) 600mm  
 Ebco Wardrobe Pullout Shoe Rack (Soft Close) 600mm

#### Applicable for 560mm Depth

Hafele Sliding Belt Rack 8 Hook Aluminium Oroglass (On Right Panel)  
 Hafele Sliding Tie Rack 20 Hook Aluminium Oroglass (On Right Panel)

# FTC2SLSW-WOTU : 2 Sliding Shutter Wardrobe with Partition without Top Unit



	Standard Dim	Min to Max Dim	Remarks
Width	1185, 1385, 1585, 1758, 1985, 2185, 2375	1185 to 2375	The width is adjustable at every 20mm Step Formula = (Total Width + Overlapping space)/2 (2375 + 25) / 2 = 1200mm
Depth	600	560 to 600	
Height	2100, 2400	2100 to 2400	The height of the cabinet is adjustable at every 10mm step.

#### Applicable for all size

Removable Shelf  
Horizontal Fixed Shelf  
Hanger Rod  
Internal Drawer (450D)

#### Applicable for 450mm

Ebco Wardrobe Pullout Basket (Soft Close) 450mm  
Ebco Wardrobe Pullout Basket (Wicker) (Soft Close) 450mm  
Ebco Wardrobe Pullout Trouser - Saree (Soft Close) (With 4 Hangers) 450mm  
Ebco Wardrobe Pullout Drawer Organiser (Soft Close) 450mm  
Ebco Wardrobe Pullout Ironing Board 430mm

#### Cabinet Depth Min -400mm

Ebco Tie & Belt Holder 300mm (On Left Panel)

#### Applicable for 600mm width

Hafele Storage Box 600mm  
Hafele Leather Storage Box 600mm  
Hafele Metal Box 600mm  
Hafele PVC Rattan Basket 600mm  
Hafele Trouser Pullout 600mm  
Ebco Wardrobe Pullout Basket (Soft Close) 600mm  
Ebco Wardrobe Pullout Basket (Wicker) (Soft Close) 600mm  
Ebco Wardrobe Pullout Trouser - Saree (Soft Close) (With 7 Hangers) 600mm  
Ebco Wardrobe Pullout Drawer Organiser (Soft Close) 600mm  
Ebco Wardrobe Pullout Shoe Rack (Soft Close) 600mm  
Hafele Wardrobe Lift (830-1150W)

#### Applicable for 560mm Depth

Hafele Sliding Belt Rack 8 Hook Aluminium Oroglass (On Right Panel)  
Hafele Sliding Tie Rack 20 Hook Aluminium Oroglass (On Right Panel)

# FTC3SLSW -2SH- Floor to Ceiling 3 Sliding Shutter-With 2 Shelf



	Standard Dim	Min to Max Dim	Remarks
Width	2400,2700,2820, 2940, 3000	2400 to 3000	Width is adjustable at Every 60mm Width Only  Formula = (Total Width + Overlapping space)/3 (2400 + 60 ) / 3 = 820mm
Depth	600	560 to 600	
Height	2700, 2850	2700 to 2850	The height of the cabinet is adjustable at every 10mm step.

#### Applicable for all size

Removable Shelf  
Horizontal Fixed Shelf  
Hanger Rod  
Internal Drawer (450D)

#### Applicable for 450mm

Ebco Wardrobe Pullout Basket (Soft Close) 450mm  
Ebco Wardrobe Pullout Basket (Wicker) (Soft Close) 450mm  
Ebco Wardrobe Pullout Trouser - Saree (Soft Close) (With 4 Hangers) 450mm  
Ebco Wardrobe Pullout Drawer Organiser (Soft Close) 450mm  
Ebco Wardrobe Pullout Ironing Board 430mm

#### Cabinet Depth Min -400mm

Ebco Tie & Belt Holder 300mm (On Left Panel)

#### Applicable for 600mm width

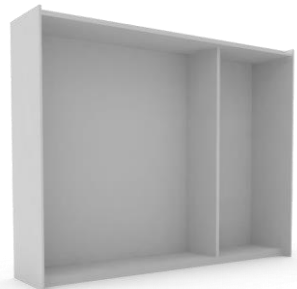
Hafele Storage Box 600mm  
Hafele Leather Storage Box 600mm  
Hafele Metal Box 600mm  
Hafele PVC Rattan Basket 600mm  
Hafele Trouser Pullout 600mm  
Ebco Wardrobe Pullout Basket (Soft Close) 600mm  
Ebco Wardrobe Pullout Basket (Wicker) (Soft Close) 600mm  
Ebco Wardrobe Pullout Trouser - Saree (Soft Close) (With 7 Hangers) 600mm  
Ebco Wardrobe Pullout Drawer Organiser (Soft Close) 600mm  
Ebco Wardrobe Pullout Shoe Rack (Soft Close) 600mm  
Hafele Wardrobe Lift (830-1150W)

#### Applicable for 560mm Depth

Hafele Sliding Belt Rack 8 Hook Aluminium Oroglass (On Right Panel)  
Hafele Sliding Tie Rack 20 Hook Aluminium Oroglass (On Right Panel)

**Note : Wardrobe Internal Height is 2100mm & Remaining space is considered as Loft Space.**

# FTC3SLSW-WOTU - Floor to Ceiling 3 Sliding Shutter



	Standard Dim	Min to Max Dim	Remarks
Width	2400,2700,2820, 2940, 3000, 3540	2400 to 3540	<p><b>Width is adjustable at Every 60mm Width Only</b></p> <p><b>Formula = (Total Width + Overlapping space)/3 (2400 + 60 ) / 3 = 820mm</b></p>
Depth	600	560 to 600	
Height	2100, 2400	2100 to 2400	The height of the cabinet is adjustable at every 10mm step.

### Applicable for all size

Removable Shelf  
Horizontal Fixed Shelf  
Hanger Rod  
Internal Drawer (450D)

### Applicable for 450mm

Ebco Wardrobe Pullout Basket (Soft Close) 450mm  
Ebco Wardrobe Pullout Basket (Wicker) (Soft Close) 450mm  
Ebco Wardrobe Pullout Trouser - Saree (Soft Close) (With 4 Hangers) 450mm  
Ebco Wardrobe Pullout Drawer Organiser (Soft Close) 450mm  
Ebco Wardrobe Pullout Ironing Board 430mm

### Cabinet Depth Min -400mm

Ebco Tie & Belt Holder 300mm (On Left Panel)

### Applicable for 600mm width

Hafele Storage Box 600mm  
Hafele Leather Storage Box 600mm  
Hafele Metal Box 600mm  
Hafele PVC Rattan Basket 600mm  
Hafele Trouser Pullout 600mm  
Ebco Wardrobe Pullout Basket (Soft Close) 600mm  
Ebco Wardrobe Pullout Basket (Wicker) (Soft Close) 600mm  
Ebco Wardrobe Pullout Trouser - Saree (Soft Close) (With 7 Hangers) 600mm  
Ebco Wardrobe Pullout Drawer Organiser (Soft Close) 600mm  
Ebco Wardrobe Pullout Shoe Rack (Soft Close) 600mm  
Hafele Wardrobe Lift (830-1150W)

### Applicable for 560mm Depth

Hafele Sliding Belt Rack 8 Hook Aluminium Oroglass (On Right Panel)  
Hafele Sliding Tie Rack 20 Hook Aluminium Oroglass (On Right Panel)

# Wardrobe – Internal Components

These Elements divide the space and create a custom-made arrangement that suits needs.



Removable Shelf



Horizontal Fixed Shelf



Vertical Panel



Internal Drawer (450D)

## Fixed Shelf:

These are spaces that are used for keeping stuff. The headroom for these spaces can be as per requirements.

## Adjustable Shelf:

These shelves initially have lesser headroom and are used for keeping smaller stuff but when adjusted, the headroom can be increased and can be used for other purposes too. (Initial and adjustable length as per requirement)

## Internal Drawer:

A drawer is that part of the closet which is used for keeping stuff that we don't want to display or stuff that is really small.

Drawers are integrated into the body of the wardrobe and are ideal for organizing, socks, and accessories. It is also the perfect solution for anyone who doesn't have space in their bedroom for a separate, free-standing chest of drawers.

Drawers should be placed at easy accessibility & at eye Level. The ideal height is at 1000mm

## Vertical Panel :

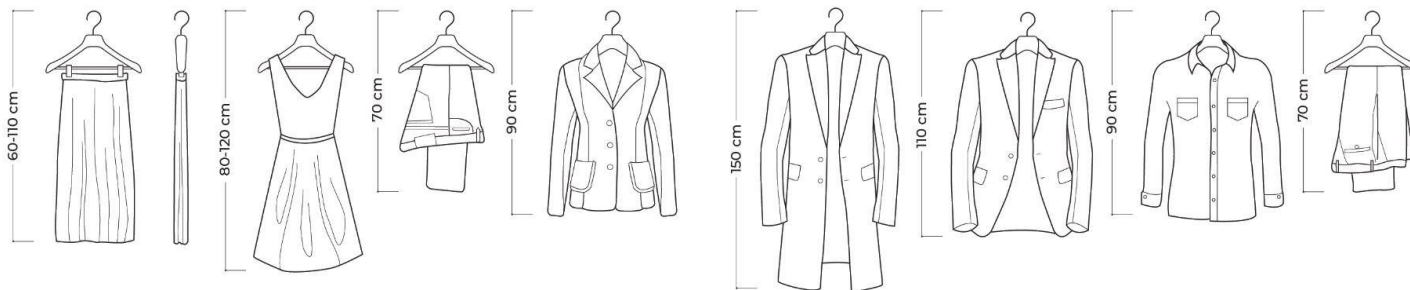
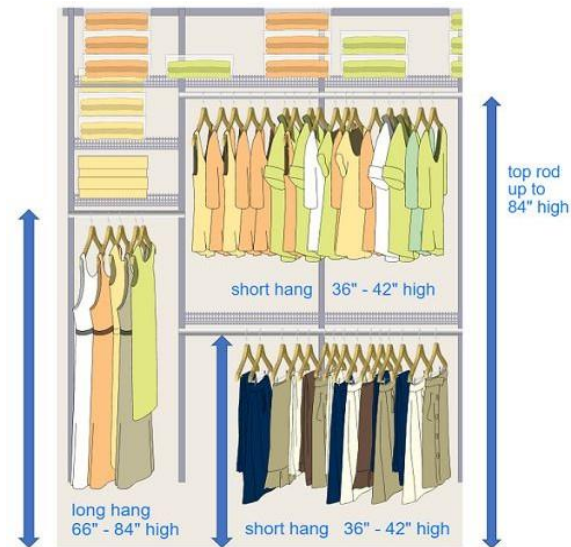
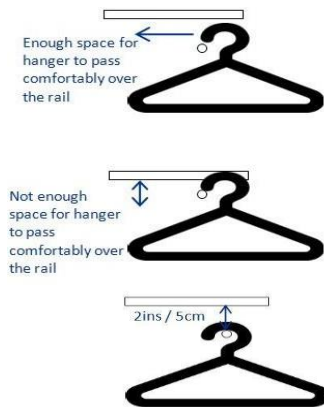
This Panel acts as a divider, Converts larger space into 2 divisions.

# Hanger Rod Placement

- Hanger rod to be placed below the fixed panel or below the top panel of the cabinet to utilize the remaining space inside the wardrobe.
- A minimum of 1000mm clear space is required to utilize the Hangers space.
- Considering the easy accessibility, the hanger rod should not be placed beyond 84" ( 2100mm).

## Special Measures:

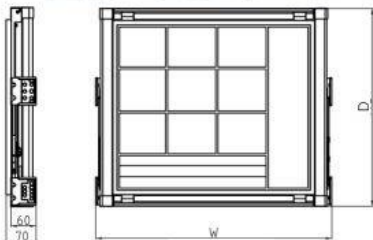
- Floor-length gowns and robes require a bar of 72" to 78" inches in height from the floor
- Street-length coats and dresses need 63" to 68" inches
- Shirts, jackets, skirts, and pants (folded) need 48 inches
- Kids' clothes are safe with 45" to 54" inches



# Accessories – Storage Box

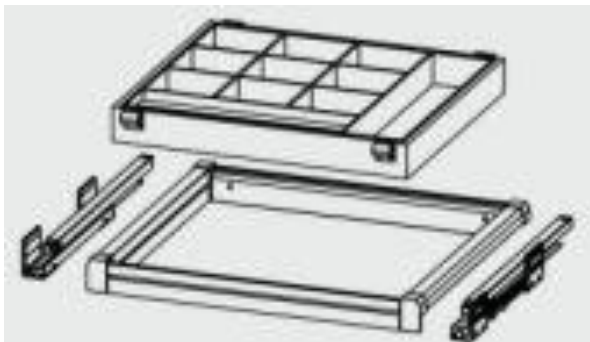
Applicable on 600mm Width 560mm Depth

Hafele Storage Box 600mm



External Cabinet Width	Dimension (WxDxH)	Article No.
600 mm	564 × 475 × 80 mm	807.95.301
900 mm	864 × 475 × 80 mm	807.95.304

- Material: Aluminium (Frame),
- Wood (Base), Felt (Storage Box Interior), Steel (Runners)
- Finish: Black (Frame), Biscuit Brown (Storage Box Interior)
- Weight Bearing Capacity: 30 kg
- **Runners: Soft Closing**



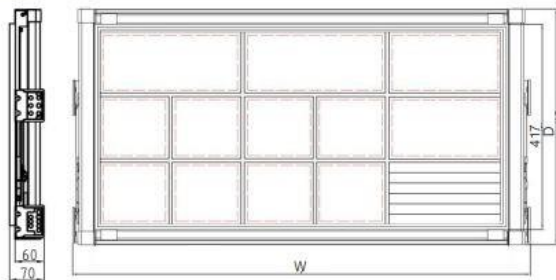
**Note** : The runner to runner width of the Aluminium Frame (that comes along with the BOM Kit) is adjustable from 564 / 864 mm (for standard external cabinet width of 600 / 900 mm respectively, considering cabinet side thickness as 18 mm) to 614 / 914 mm (if the width of the cabinet is more than 600 / 900 mm respectively). **The total adjustable width is therefore 50 mm ( 614-564 / 914-864).** The frame width can be extended by pulling it from both sides.



# Accessories – Leather Storage Box

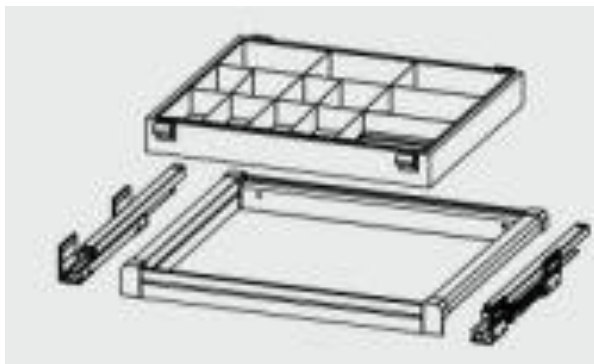
Applicable on 600mm Width 560mm Depth

Hafele Leather Storage Box 600mm



External Cabinet Width	Dimension (WxDxH)	Article No.
600 mm	564 × 475 × 80 mm	807.96.331
900 mm	864 × 475 × 80 mm	807.96.334

- Material: Aluminium (Frame), Wood (Base), Felt (Storage Box Interior), Steel (Runners)
- Finish: Black (Frame), Peanut Brown (Storage Box Interior)
- Weight Bearing Capacity: 30 kg
- Runners: Soft Closing



**Note :** The runner to runner width of the Aluminium Frame (that comes along with the BOM Kit) is adjustable from 564 / 864 mm (for standard external cabinet width of 600 / 900 mm respectively, considering cabinet side thickness as 18 mm) to 614 / 914 mm (if the width of the cabinet is more than 600 / 900 mm respectively). The total adjustable width is therefore 50 mm ( 614-564 / 914-864). The frame width can be extended by pulling it from both sides.

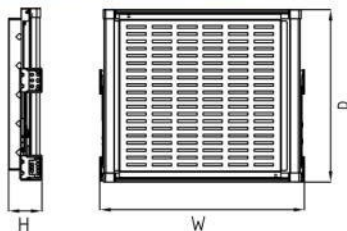
# Accessories – Metal Storage Box

Applicable on 600mm Width 560mm Depth

Hafele Metal Storage Box 600mm



- Material: Aluminium (Frame), Perforated Steel (Metal Box), Steel (Runners)
- Finish: Black
- Weight Bearing Capacity: 30 kg
- Runners: Soft Closing



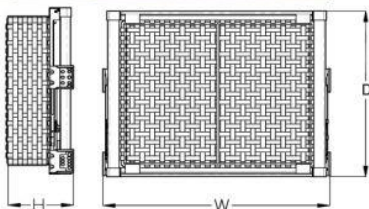
**Note :** The runner to runner width of the Aluminium Frame (that comes along with the BOM Kit) is adjustable from 564 / 864 mm (for standard external cabinet width of 600 / 900 mm respectively, considering cabinet side thickness as 18 mm) to 614 / 914 mm (if the width of the cabinet is more than 600 / 900 mm respectively). The total adjustable width is therefore 50 mm ( 614-564 / 914-864). The frame width can be extended by pulling it from both sides.

External Cabinet Width	Dimension (WxDxH)	Article No.
600 mm	564 × 475 × 150 mm	807.95.351
900 mm	864 × 475 × 150 mm	807.95.354

# Accessories – PVC Rattan Basket

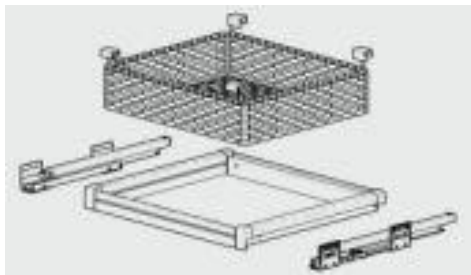
Applicable on 600mm Width 560mm Depth

Hafele PVC Rattan Basket 600mm



External Cabinet Width	Dimension (WxDxH)	Article No.
600 mm	564 × 475 × 170 mm	807.96.351
900 mm	864 × 475 × 170 mm	807.96.354

- Material: Aluminium (Frame), PVC Rattan (Basket), Steel (Runners)
- Finis : Black (Frame), Wheat Brown (Basket)
- Weight Bearing Capacity : 30 kg
- Runners : Soft Closing
- Width Adjustment: 50 mm (25 mm on either side)

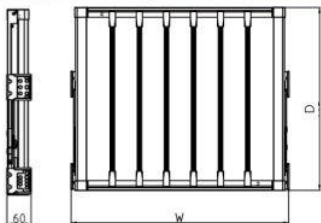


**Note :** The runner to runner width of the Aluminium Frame (that comes along with the BOM Kit) is adjustable from 564 / 864 mm (for standard external cabinet width of 600 / 900 mm respectively, considering cabinet side thickness as 18 mm) to 614 / 914 mm (if the width of the cabinet is more than 600 / 900 mm respectively). The total adjustable width is therefore 50 mm ( 614-564 / 914-864). The frame width can be extended by pulling it from both sides.

# Accessories – Trouser Pull-Out

Applicable on 600mm Width 560mm Depth

Hafele Trouser Pull-Out 600mm



External Cabinet Width	Dimension (WxDxH)	Article No.
600 mm	564 × 475 × 60 mm	807.95.321

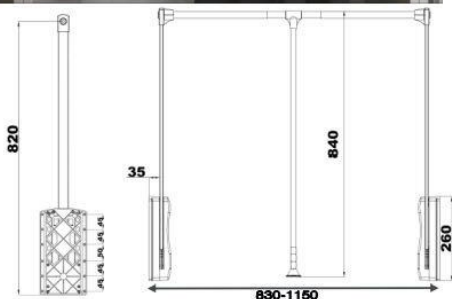
- Material: Aluminium (Frame), Steel (Runners), Aluminium with Anti-skid Rubber Coating (Braces)
- Finish: Black
- Weight Bearing Capacity: 30 kg
- Runners: Soft Closing
- Width Adjustment 50 mm (25 mm on either side)
- Position of Braces: Adjustable



**Note** : The runner-to-runner width of the Aluminium Frame (that comes along with the BOM Kit) is adjustable from 564 / 864 mm (for standard external cabinet width of 600 / 900 mm respectively, considering cabinet side thickness as 18 mm) to 614 / 914 mm (if the width of the cabinet is more than 600 / 900 mm respectively). The total adjustable width is therefore 50 mm ( 614-564 / 914-864). The frame width can be extended by pulling it from both sides.

# Accessories – Hafele Wardrobe Lift (830-1150W)

Applicable 830mm Width



Minimum Internal Cabinet Width	Dimension (W)	Article No.
830 mm	830-1150 mm	805.11.354



- > Material : Aluminium (Strap Pipe & Arms), Plastic (Side Cover Cap and Pull Handle)
- > Finish : Black
- > Weight Bearing Capacity : 8-10 kg.
- > Mounting : Attached to either sides of the wardrobe with screws
- > Integrated Silent Closing Mechanism
- > The Adjustable Strap Pipe can be extended from 830 mm up to a width of 1150 mm owing to its telescopic structure

- > 2 x Covers
- > 1 x Pull Handle
- > 1 x Adjustable Strap Pipe
- > 2 x Arms
- > 2 x End Connectors
- > Fixing Screws
- > Installation Manual

**Note : This Accessory is suitable to place above 7ft Height.**

# Accessories – Hafele Belt & Tie Hook

Applicable 560mm Depth

Sliding Belt Rack 8 Hook Aluminium  
Oroglass



Sliding Tie Rack 20 Hook Aluminium  
Oroglass



Applicable 400mm Depth

Tie and belt rack, Chrome Plated  
(300 X 30 X 270) on Right Panel





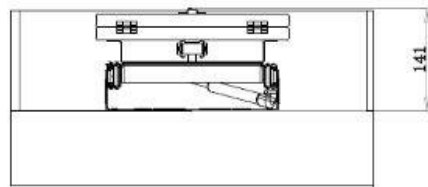
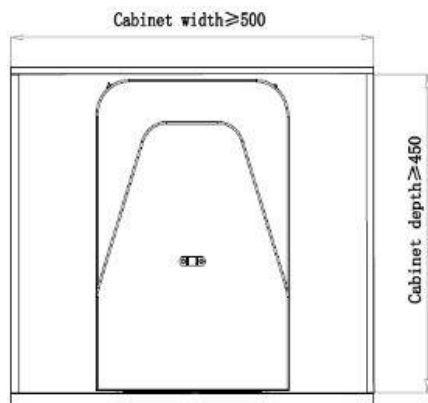
# Accessories – Ebco Pullout Ironing Board

Applicable 430mm Width

Pullout Ironing Board 430mm



- Aesthetically designed, space saving ironing board which slides in the wardrobe easily.
- Easy to use in standing position as the board can be easily rotated to 180° for left and right hand side positions.
- Practical in use and can be fitted on any shelf.
- Folds in half and slides in for easy storage.
- Finish: Grey



Code	Size (mm)
WPIB-4360 GR	430 x 300 x 140

# Accessories – Ebco Pullout Basket (Soft Close)

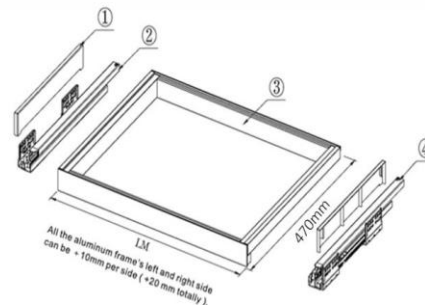
Applicable Width - 450mm and 600mm

Pullout Basket (Soft Close)



- Organise your clothes in a better way with these pull-out baskets for wardrobes.
- Easy pull out providing clear access to your outfits.
- In built soft close feature for silent & effortless closing

Accessories No.	Accessories	Qty
①	Slides' Cover	2
②	Left slide	1
③	Aluminum frame	1
④	Right slide	1



Code	Size (mm)
WPB-45 SC BR	414 x 470 x 140
WPB-60 SC BR	564 x 470 x 140



# Accessories – Ebco Pullout Wicker Basket (Soft Close)

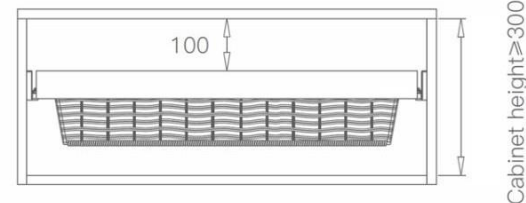
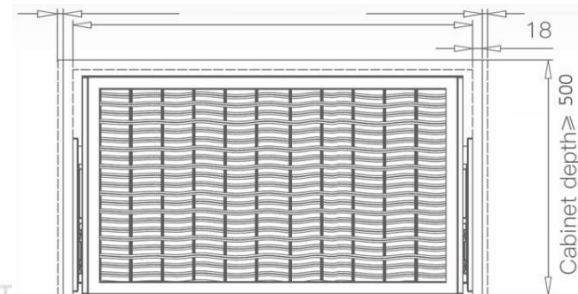
Applicable Width - 450mm and 600mm

Pullout Basket (Wicker) (Soft Close)



- Well - designed plastic wicker basket with soft close feature is ideal for organised storage in wardrobes
- Easy pull out providing clear access to your outfits
- Available in brown finish
- Designed for 450, 600, mm wide cabinets

Code	Size (mm)
WPBW-45 SC BR	414 x 470 x 140
WPBW-60 SC BR	564 x 470 x 140



# Accessories – Ebco Trouser / Saree Pullout (Soft Close)

Applicable Width - 450mm and 600mm

Trouser / Saree Pullout (Soft Close)



## Special Features

- The Wardrobe Rack has a high capacity; each trouser hanger is designed in loop shape and can hold at least two pairs. Each rack also has two hangers for skirts or ties.
- The hangers are easily removable from the structure. The Wardrobe Rack is fastened to both sides of the wardrobe and the width is adjustable using two telescopic tubes to fit different sized units. Partially pulls out on aluminium ball bearing runners.
- The plastic parts are in nylon reinforced with grey fiberglass, the profiles are in silver anodized aluminium and the tubes are in chromium plated steel.
- Fixes directly into the "System 32" hole with fastening screws provided in the pack.

# Accessories – Ebco Pullout Drawer Organiser (Soft Close)

Applicable Width - 450mm and 600mm

Pullout Drawer Organiser (Soft Close)



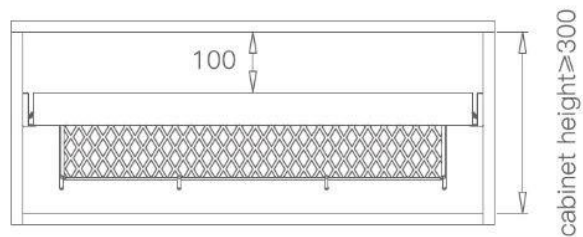
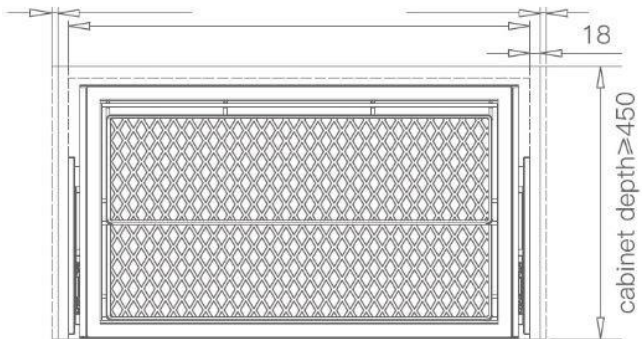
- Thoughtfully designed to organize your accessories for convenient access and easy pull-out
- Ready to use product that can be installed easily in any type of wardrobe
- Soft velvet material at bottom protects your accessories from any type of dirt & damage
- Ideal for storing variety of jewellery such as necklaces, rings, earrings or more.
- in built soft close feature for silent & effortless closing
- Designed for 450/600 mm wide cabinets

Code	Size (mm)
WPDO-45 SC BR	414 x 470 x 56
WPDO-60 SC BR	564 x 470 x 56

# Accessories – Ebco Pullout Shoe Rack (Soft Close)

Applicable Width - 600mm

Pullout Shoe Rack (Soft Close)



Code	Size (mm)
WPSR-60-SC-BR	564 x 470 x 56

# Wardrobe - FAQ

1. Do I need to add skirting separately for the wardrobe?

No, all wardrobe modules come with skirting in Shutter finish.

2. How mirror is fixed on Wardrobes?

Mirror is fixed with the help of studs on swing doors and in the Alu Frame slot in case of sliding. For extra safety, we use 3M tape between the surfaces.

3. Can I apply multiple Laminates on a single shutter?

No you cannot apply multiple laminates in hinged wardrobes.

4. Is Armadio shutter available in membrane finish?

Armadio shutters are not available in membrane finishes



**i**NTERIOR  
C O M P A N Y . C O M  
— By Square Yards —

Thank You.....!